



# **Logistics Indicator**

## Results for 2006-Q4 to 2014-Q2

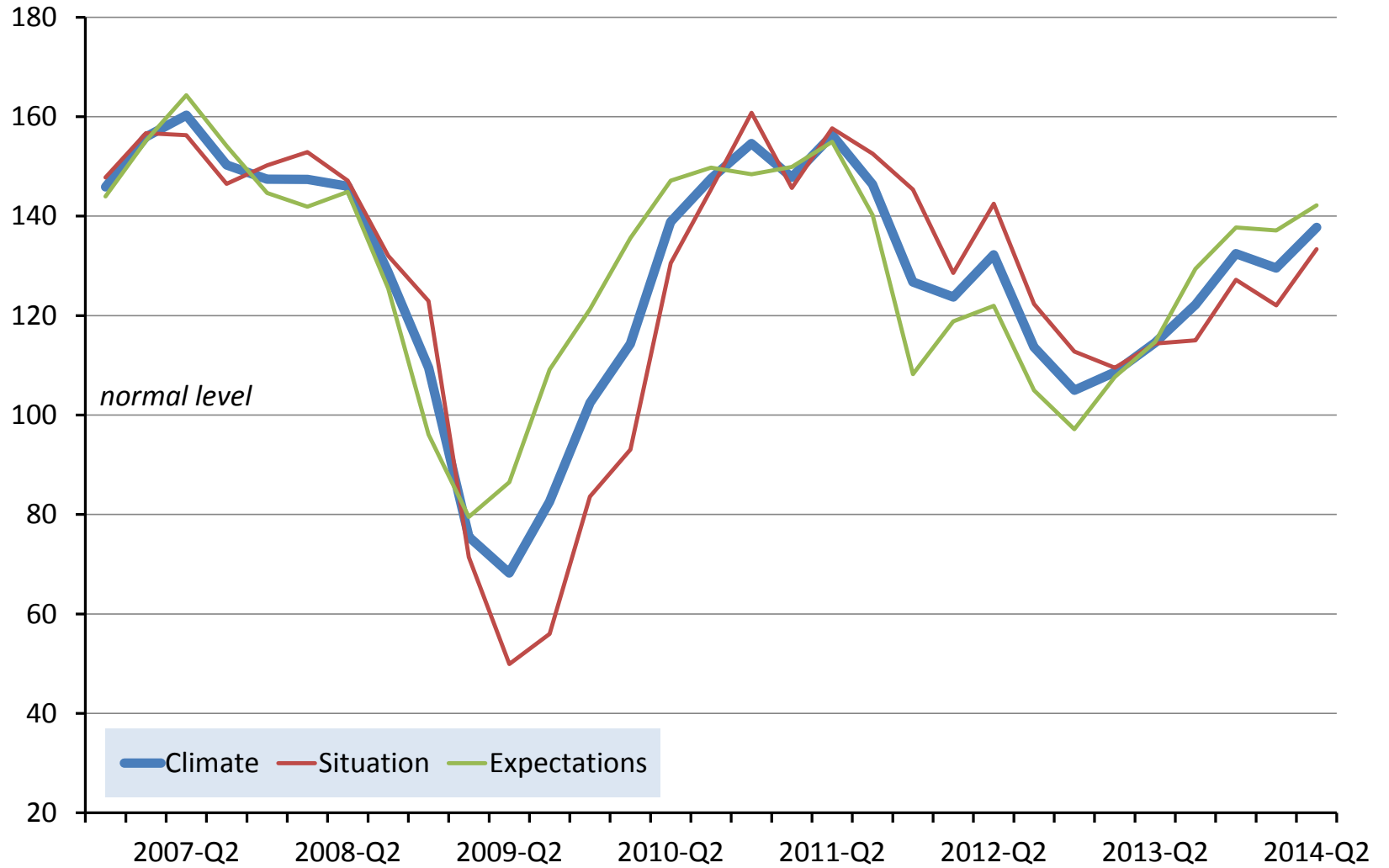
---

Prof. Dr. Stefan Kooths, Forecasting Center



# Composite Indicator

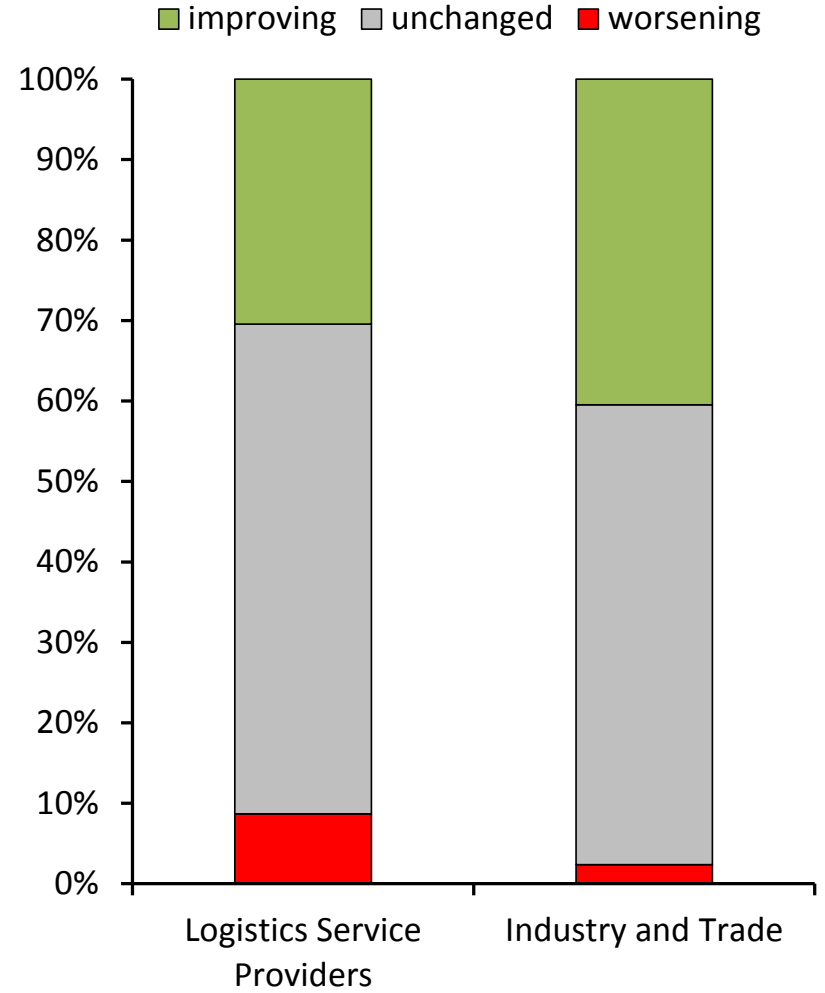
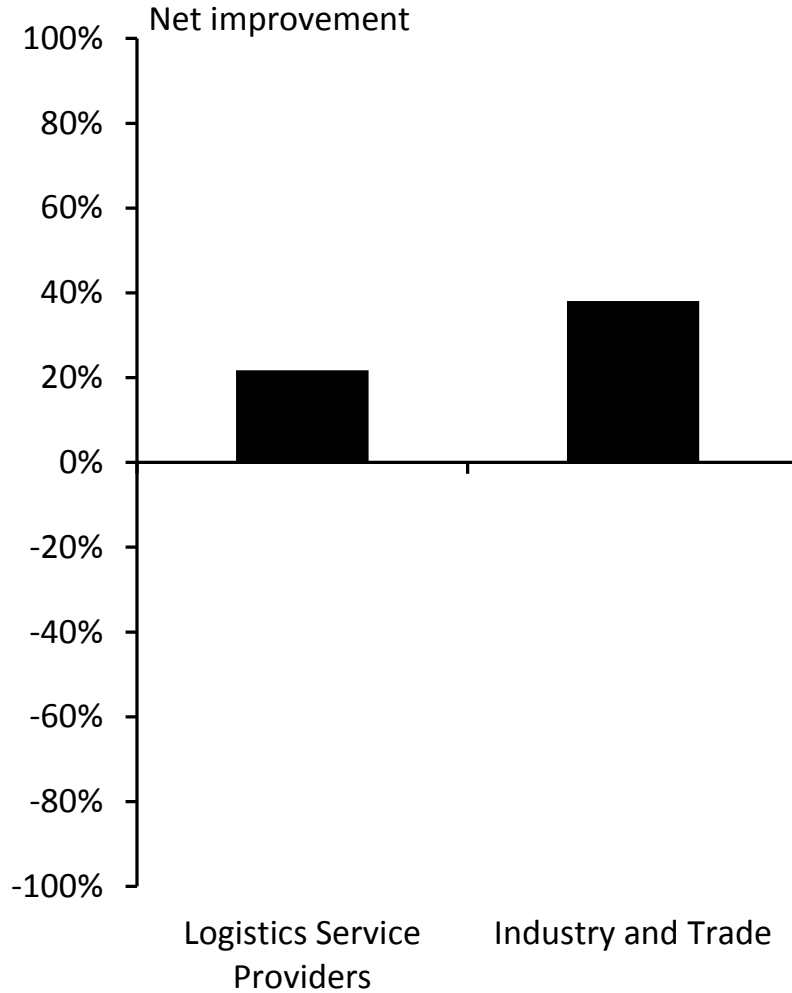
Index





# Business trend

Percent of all respondents

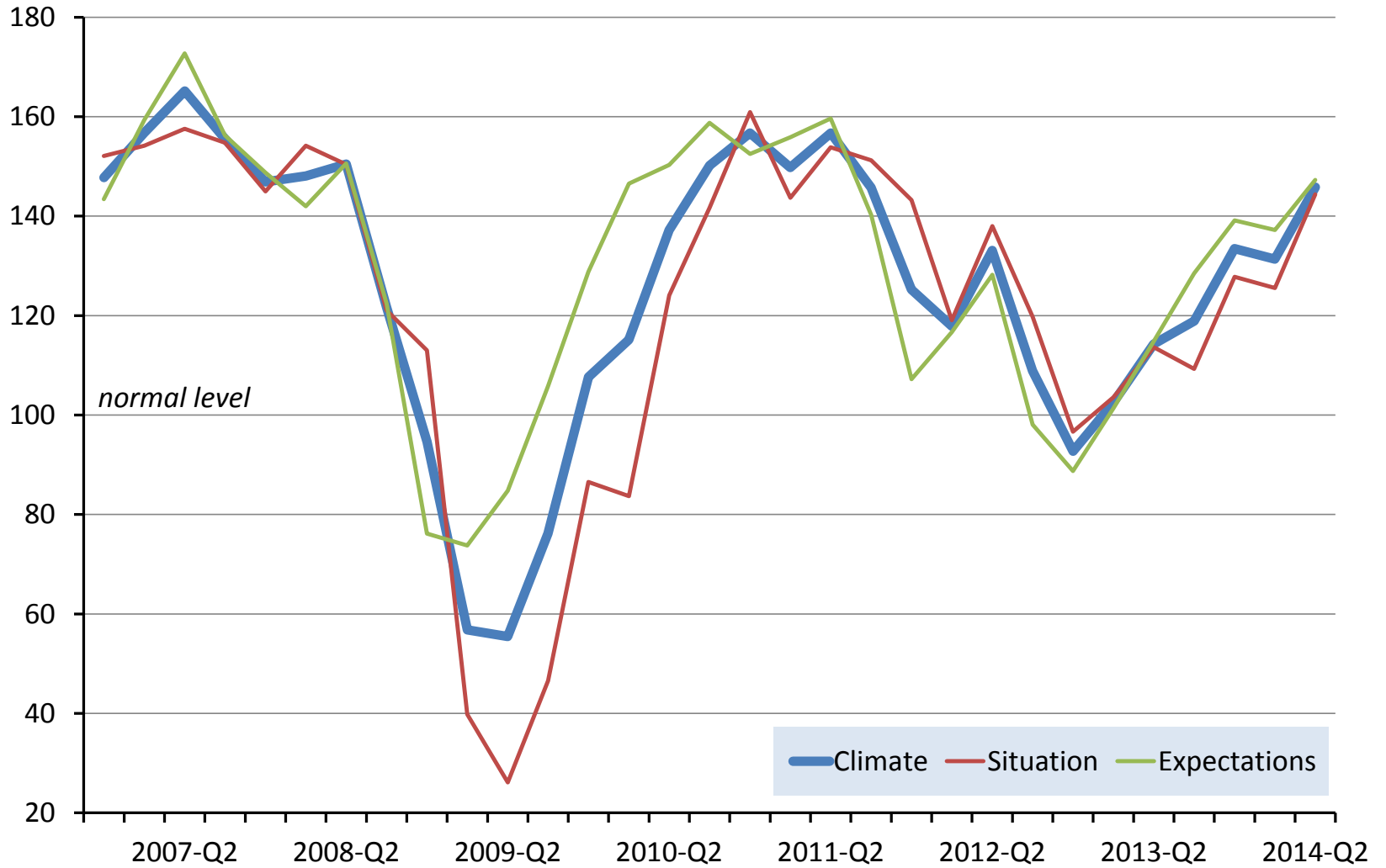


Expected trend in upcoming 3 months



# Logistics Service Providers

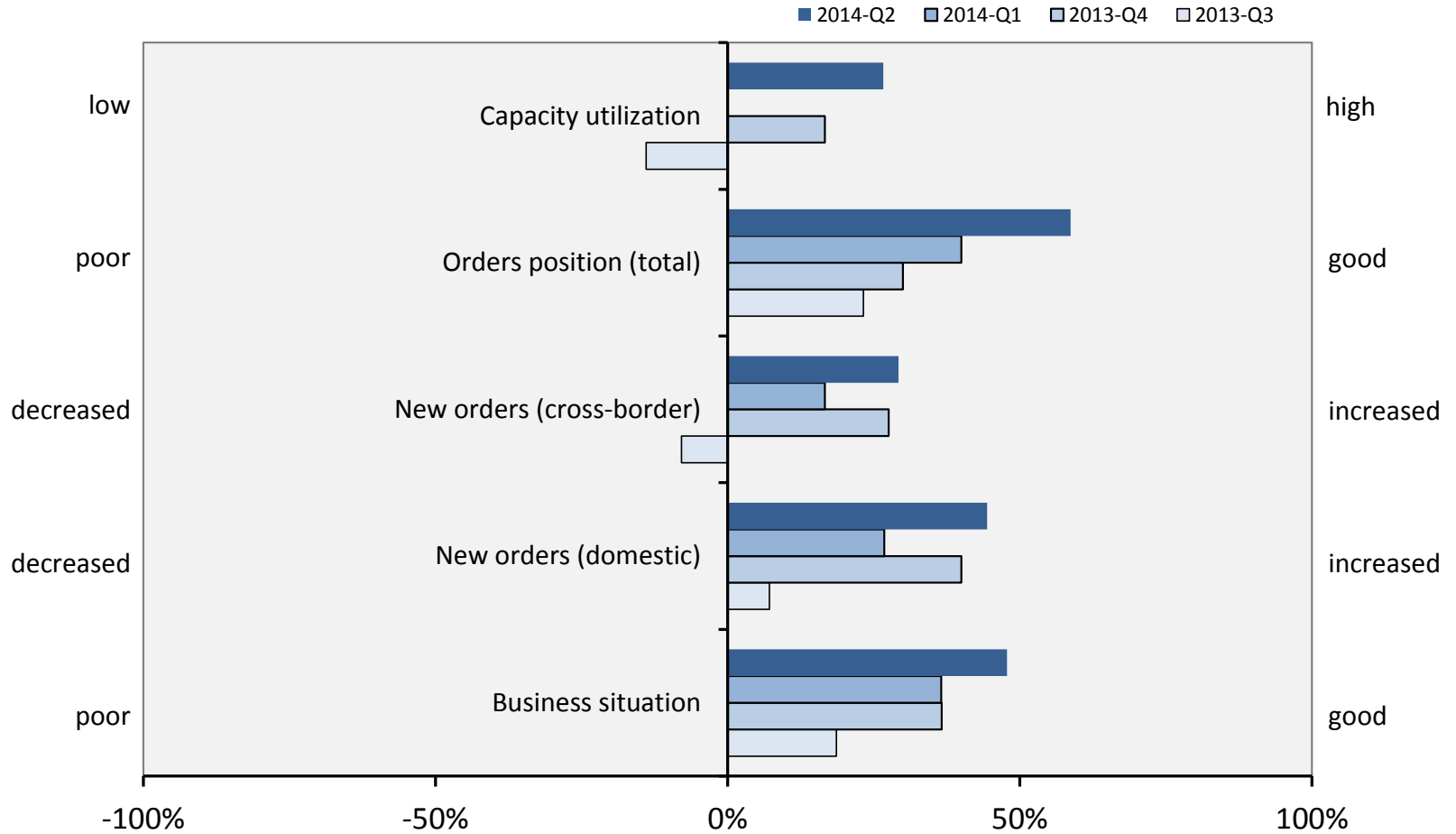
Index





# Logistics Service Providers: Situation

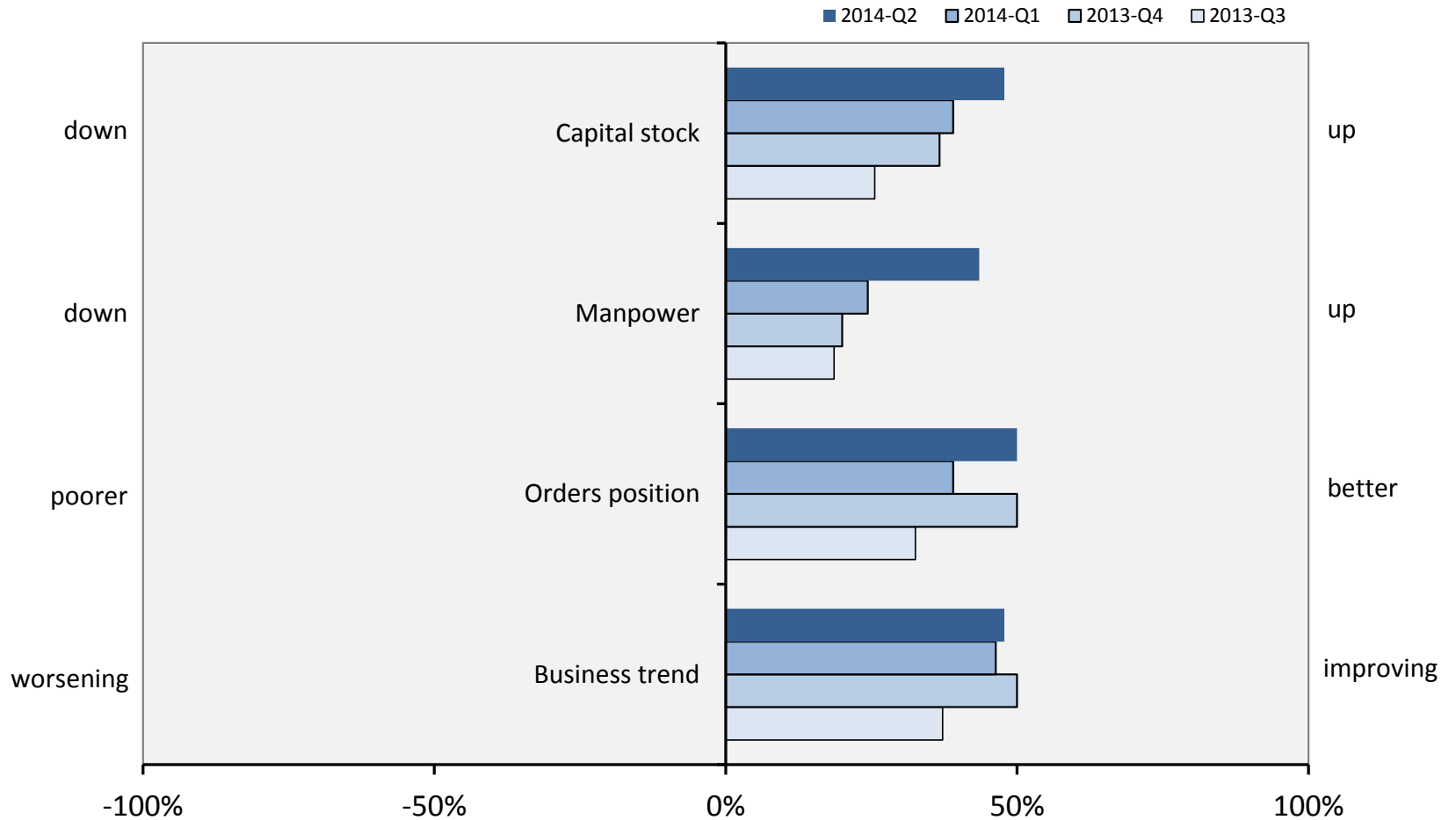
Balances (positive minus negative) as percent of total answers; assessment of current quarter





# Logistics Service Providers: Expectations

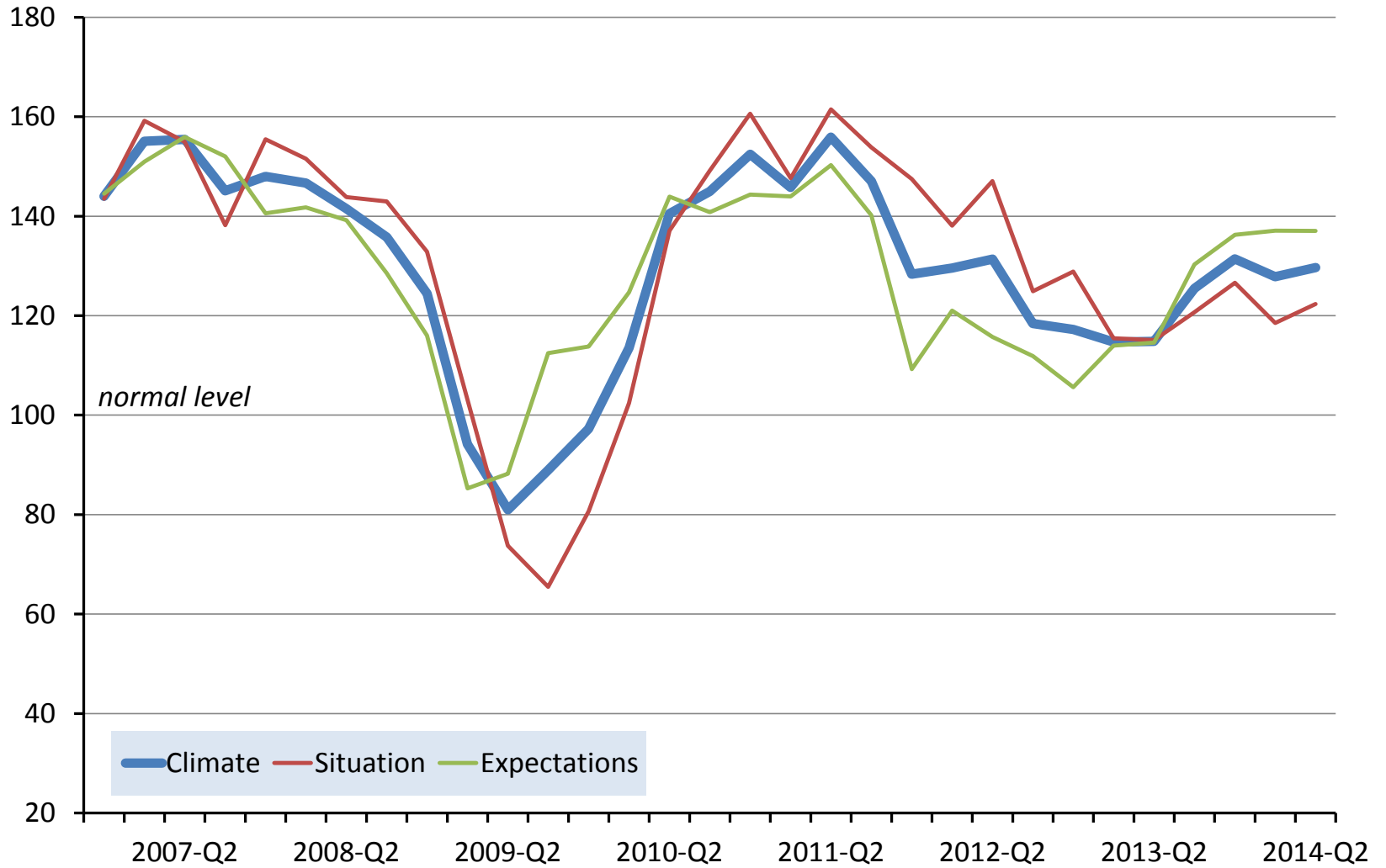
Balances (positive minus negative) as percent of total answers; horizon: 12 months





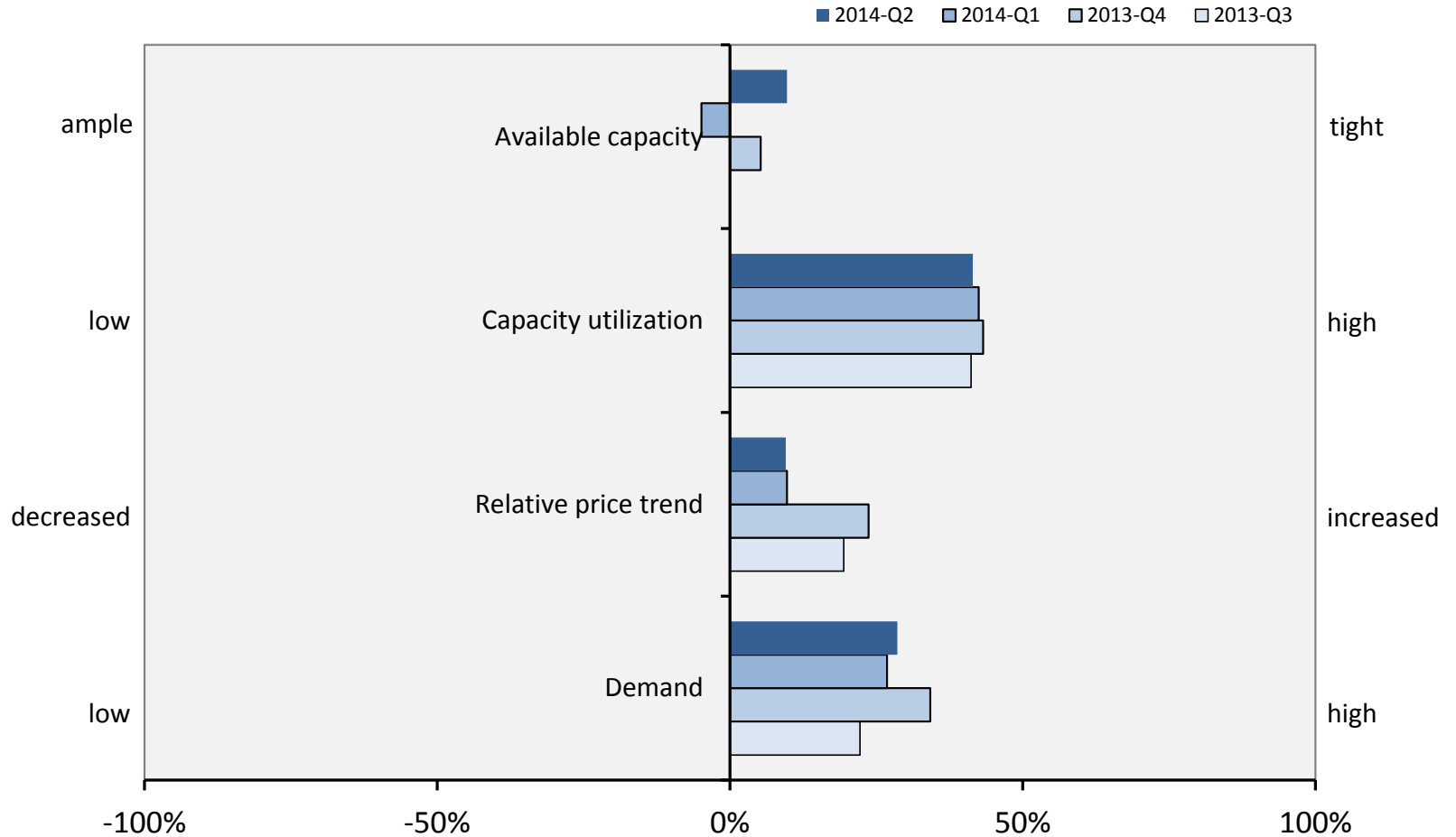
# Logistics Activity in Industry and Trade

Index



# Industry and Trade: Situation

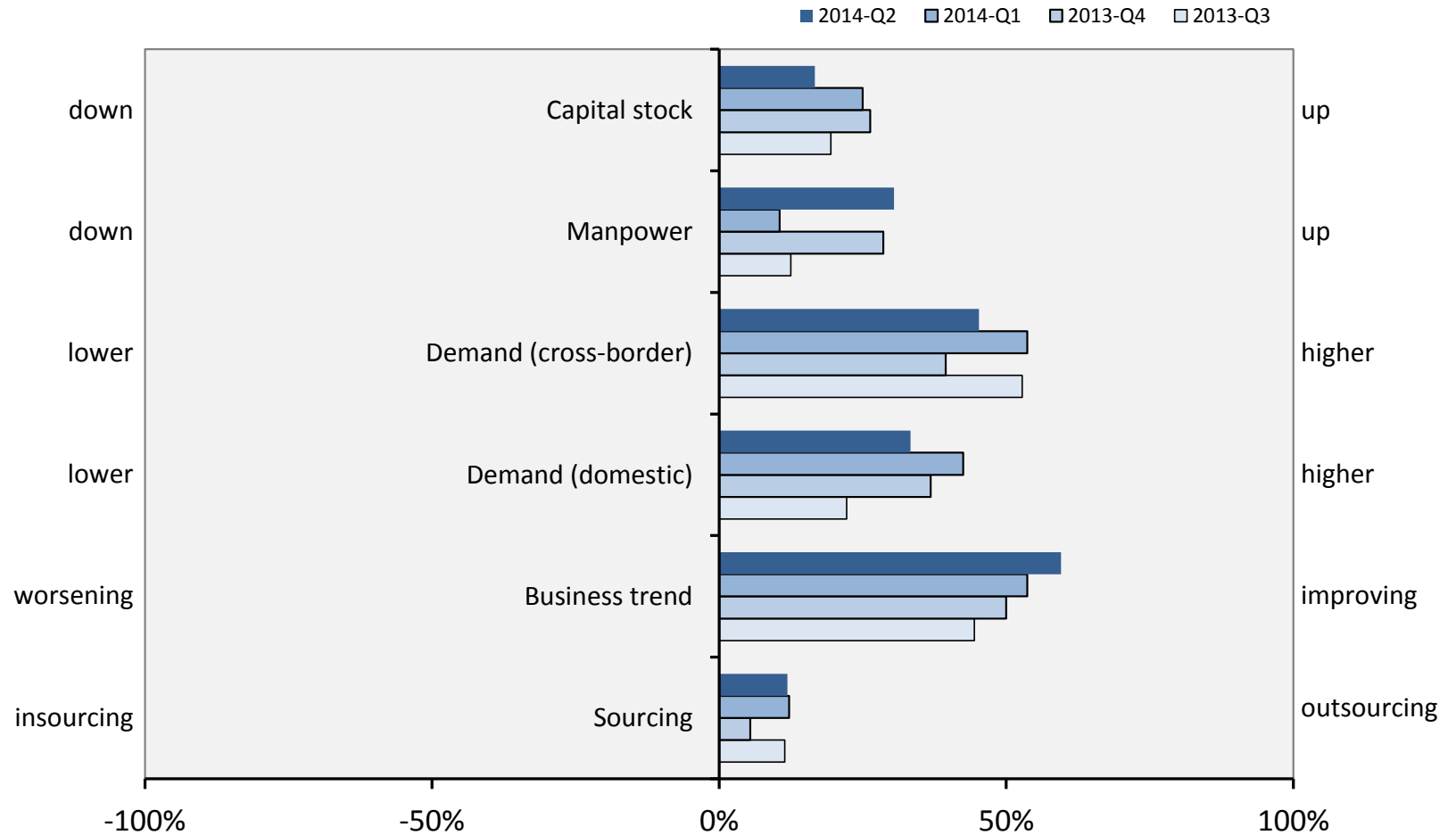
Balances (positive minus negative) as percent of total answers; assessment of current quarter





# Industry and Trade: Expectations

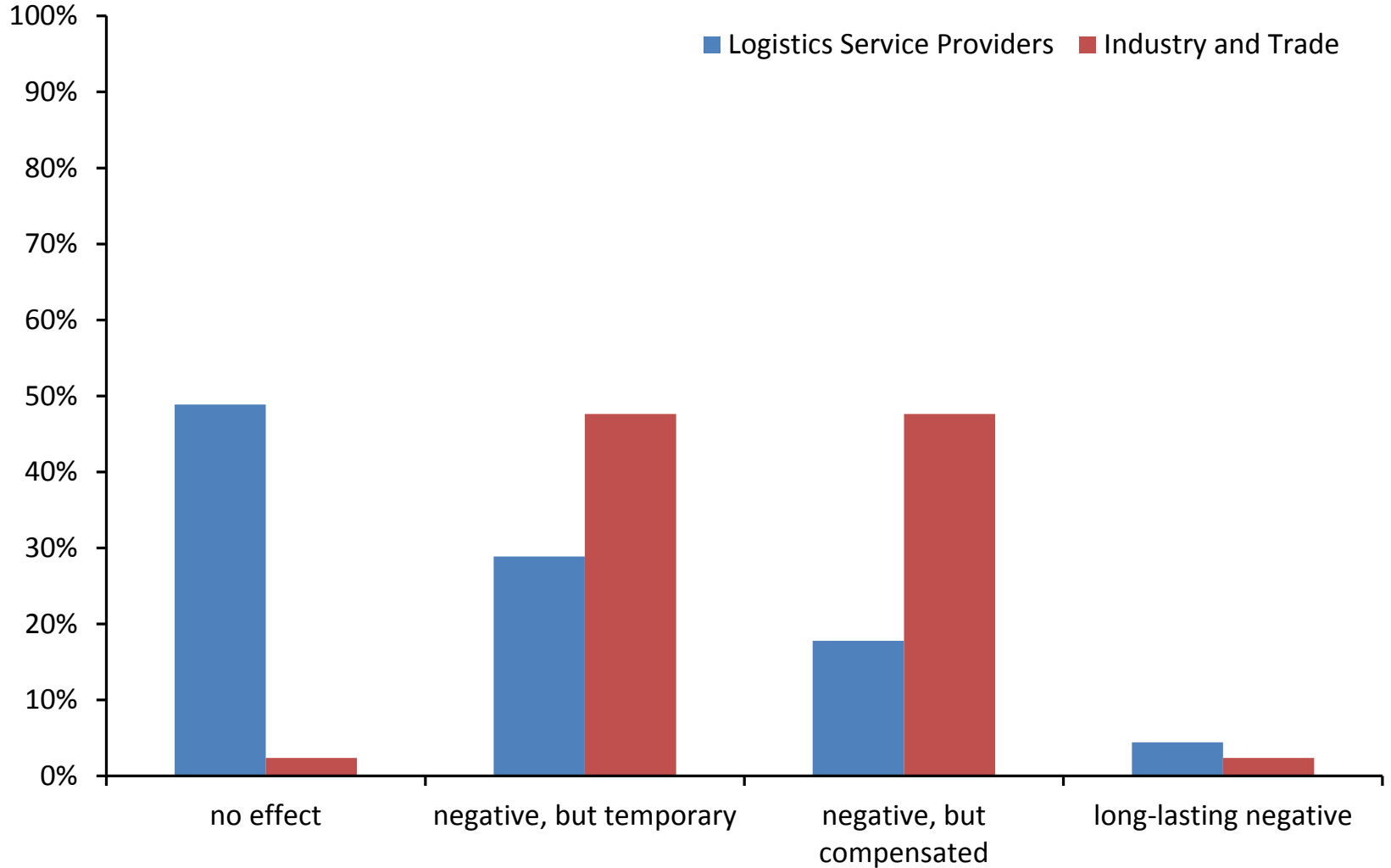
Balances (positive minus negative) as percent of total answers; 12-months horizon





# Impact of the crisis in the Ukraine and of sanctions against Russia?

Percent of all respondents



Will the crisis in the Ukraine and possible sanctions against Russia affect your logistics activities over the next 6 months?

# Methodology

- The quarterly Logistics Indicator is computed by the Kiel Institute for the World Economy on behalf of the German Logistics Association (BVL). It reflects the current business situation as well as the expectations over the next 12 months of Germany's logistics service providers and customers of logistical services in industry and trade. Each quarter, a panel of 200 decision makers is polled (100 managers of the most important logistics service providers and 100 top executives of industrial customers of logistical services). Polling takes place in the first half of the mid-quarter month. The design of the questionnaire targets the cyclical assessment of all logistics-related activities in the Federal Republic of Germany. All questions on quarterly developments refer to seasonally adjusted values.
- For all questions, three alternative answers apply: positive/expansionary, normal/neutral, and negative/contractionary. In a first step, the polled answers are balanced by subtracting the negative answers from the positive ones. The results are then related to the number of all answers for each question (the resulting percentage values are published separately, see slides 4, 5, 7, and 8).  
Next, for each market side and each indicator category (current situation and 12-months expectations) all relative balances are averaged and scaled to a span reaching from 0 (implying that 100 % of all answers are negative) to 200 (only positive answers). A value of 100 (normal level) indicates that positive and negative answers are equally represented. By further averaging the situation and expectations components the climate indicator for each market side results. Finally, the composite logistics indicator represents the equally weighted mean of the corresponding specific market side values.